



FOR THE  
**DISCERNING**  
ENTERTAINER



# **/ GrandFire /** The GrandFire Difference

---

## **Here's why we're different:**



## **A Grand Occasion**

The guests are gathering. Drinks are in hand, friends and family are catching up, accompanied by plenty of laughter. Workmates share stories of big wins from the week. The promise of an amazing meal has brought them all to your place.

GrandFire BBQ's make a stunning impact for the discerning entertainer. Owning one means you will enjoy the sophistication and sleek finish of a BBQ crafted from the finest quality stainless steel. Guests will be treated to perfectly cooked steak, succulent chicken and chargrilled vegetables of restaurant quality.

If your demand for style must be matched by incomparable performance, only a GrandFire BBQ is capable of meeting your expectations.

---

## **Enduring Quality**

The closer you look at a GrandFire BBQ, the better it looks. You'll discover our stainless steel is commercial grade, promising greater toughness and corrosion resistance than lesser BBQs. It's also double skinned in zones exposed directly to high temperature.

Our confidence means you'll receive the benefit of an outstanding warranty\* on your new GrandFire BBQ.

\*Please see inside back cover (specifications) for warranty details.



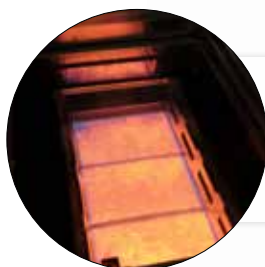


Outdoor Modular Kitchens now available

# / GrandFire / Features

## Rotisserie Burner and Kit

*Gives consistent, infrared radiant heat for slow rotisserie cooking (All models except Classic 26")*



## Full Glassed High-Temp Sear Zone

*Provides high-intensity infrared heat for searing food and sealing in flavor (Deluxe 42")*



## Self-Ignition Valve System

*Greater flexibility and control with individual dials for each burner (Classic 26", 32", & 38")*



## Decorative Control Panel LED Lights

*Gives that extra modern look at night (Deluxe 30" & 42")*

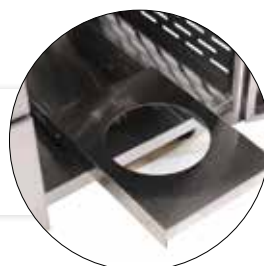


## Stainless Steel Cooking Surfaces

*Combination of both solid SS plates and SS grills (All models)*

## Pull-Out Gas Bottle Slide

*Provides easy access to your gas bottle (All models)*



### Built-In Halogen Lights

Enhanced cooking visibility  
(All models except Classic 26")



### Double Skinned Hood

Added insulation for easily holding temperature  
(All models)



### U-Shaped Burners

Ensure even heat within cooking zones  
(Shape varies between models)



### Side Burner

Ability to add a pot or wok to your cooking - move your kitchen outdoors (Deluxe 30" & 42")



### Ceramic Briquette

High quality ceramic briquettes for temperature and heat recovery (Deluxe 30" & 42")



### / Icon Key /



2 x main cooking burners. Available in the 26" barbecue.



Protective weather cover. Comes with all barbecue models.



3 x main cooking burners. Available in the 32" barbecue.



Storage. All the barbecues come with storage space.



4 x main cooking burners. Available in the 38" barbecue.



Side burner. For an extra element to cook on. Included in Deluxe models / Optional for Classic models.



Front panel LED lighting (above front panel knobs). Available in all deluxe models.



Rotisserie Burner & Kit. 240V powered motor. Available on all models (except 26").



Full glassed high-temp infrared sear zone. Available in 42" deluxe model.



Deluxe version. Bigger U-Shaped cooking burner.

# / GrandFire / Classic Series

## Classic 26" BBQ



Model: GF26GC

Self-ignition valve system

2 x foldable side shelves

Pull-out gas bottle slide

Zinc cast chromed knob

Stainless steel flame tamer

Fueled by LPG or NG

## Classic 32" BBQ



Model: GF32LBGC

Self-ignition valve system

2 x built-in halogen lights

2 x foldable side shelves

Pull-out gas bottle slide

Water proof metal switch

Zinc cast chromed knob

Stainless steel flame tamer

Fueled by LPG or NG

## Classic 38" BBQ



Model: GF38LBGC

Self-ignition valve system

2 x built-in halogen lights

2 x side shelves

Pull-out gas bottle slide

Water proof metal switch

Zinc cast chromed knob

Stainless steel flame tamer

Fueled by LPG or NG



# Deluxe Series / GrandFire /

## Deluxe 30" BBQ



## Deluxe 42" BBQ



Model: GFD30LBGC

- Electric hot surface ignition system
- Pull-out gas bottle slide
- Ceramic briquettes burner cover
- Water proof illuminated metal switch
- Zinc cast chromed knob
- Two position rotisserie system
- Zone dividers to regulate different temperatures
- Multi-position and stow away warming rack
- Fueled by LPG or NG



Model: GFD42LBSGC

- Electric hot surface ignition system
- Pull-out gas bottle slide
- Ceramic briquettes burner cover
- Full glassed high-temp sear zone
- Water proof illuminated metal switch
- Zinc cast chromed knob
- Two position rotisserie system
- Zone dividers to regulate different temperatures
- Multi-position and stow away warming rack
- Fueled by LPG or NG



# / GrandFire / Built-In Classic Series

## Classic 26" BBQ



Model: **GF26**

- Self-ignition valve system
- Stainless steel hotplate & grills
- Zinc cast chromed knob
- Stainless steel flame tamer
- Fueled by LPG or NG

## Classic 32" BBQ head



Model: **GF32LB**

- Self-ignition valve system
- Stainless steel hotplate & grills
- 2 x built-in halogen lights
- Water proof metal switch
- Zinc cast chromed knob
- Stainless steel flame tamer
- Fueled by LPG or NG

## Classic 38" BBQ head



Model: **GF38LB**

- Self-ignition valve system
- Stainless steel hotplate & grills
- 2 x built-in halogen lights
- Water proof metal switch
- Zinc cast chromed knob
- Stainless steel flame tamer
- Fueled by LPG or NG





# Built-In Deluxe Series / GrandFire /

## Deluxe 30" BBQ head



Model: GFD30LB

- Electric hot surface ignition system
- Pull-out gas bottle slide
- Ceramic briquettes burner cover
- Water proof illuminated metal switch
- Zinc cast chromed knob
- Two position rotisserie system
- Zone dividers to regulate different temperatures
- Multi-position and stow away warming rack
- Fueled by LPG or NG

## Deluxe 42" BBQ head



Model: GFD42LBS

- Electric hot surface ignition system
- Pull-out gas bottle slide
- Multi-position and stow away warming rack
- Ceramic briquettes burner cover
- Full glassed high-temp sear zone
- Water proof illuminated metal switch
- Zinc cast chromed knob
- Two position rotisserie system
- Zone dividers to regulate different temperatures
- Fueled by LPG or NG



# / GrandFire / Specifications - Built-In Series

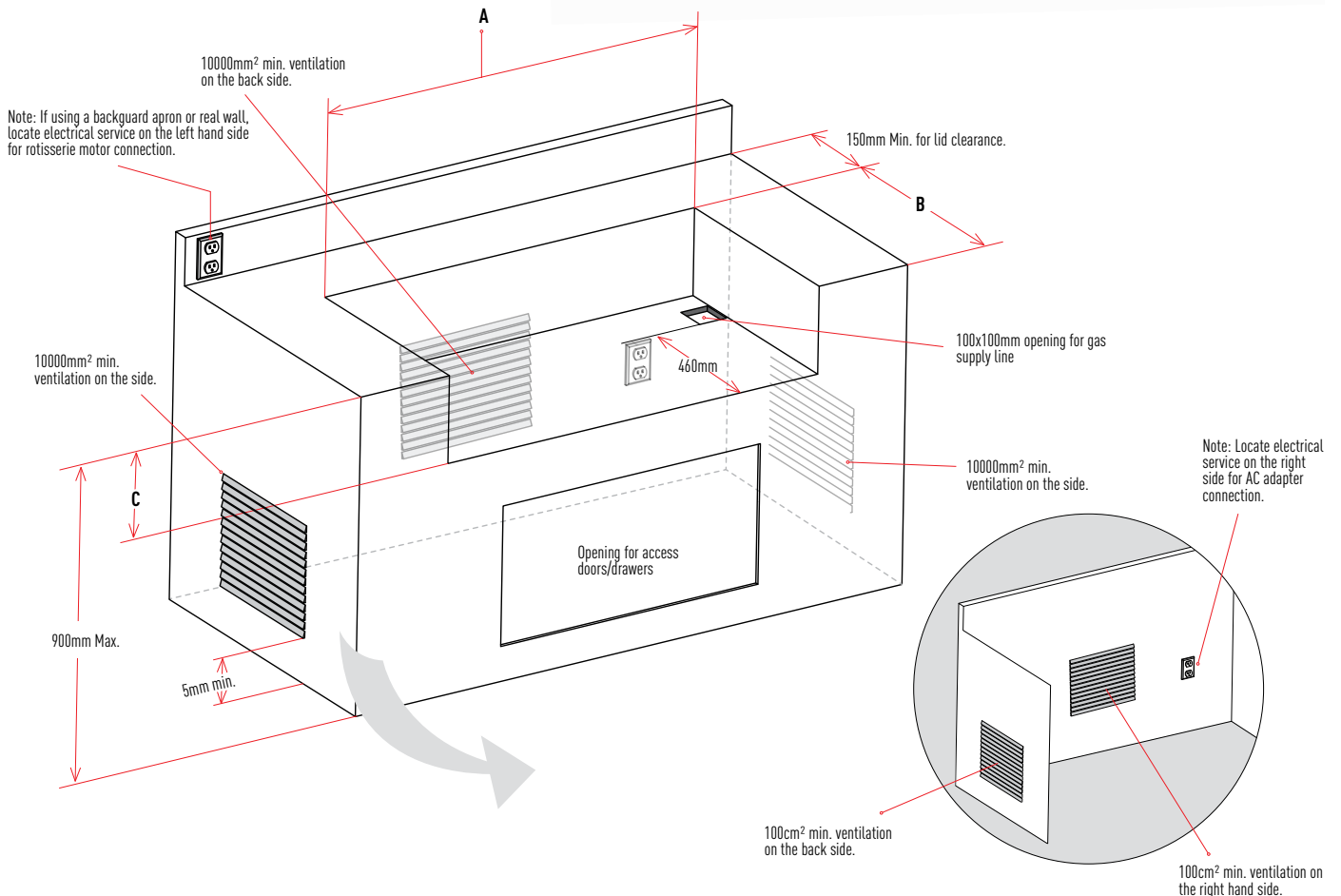
## Built-in model - recommended cut-out dimensions

	Model	A) Length (mm)	B) Width (mm)	C) Height (mm)
GrandFire Classic 26"	GF26	613	552	270
GrandFire Classic 32"	GF32LB	765	552	270
GrandFire Classic 38"	GF38LB	918	552	270
GrandFire Deluxe 30"	GFD30LB	715	585	280
GrandFire Deluxe 42"	GFD42LBS	1020	585	280

\* The built-in island construction material should be all non-combustible material. It cannot have any ventilation holes except for the hole required for the gas supply in the cut-out base.



Specifications



# Additions - Built-In Series / GrandFire /

## Side Burner

**Model:** GFKSB1

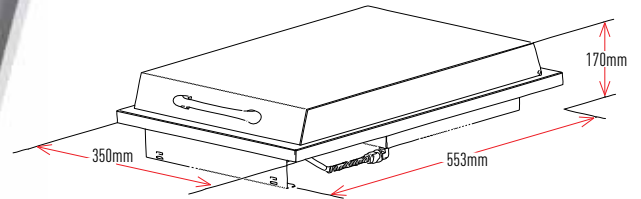
Constructed with 443 stainless steel

18.5MJ/h burner

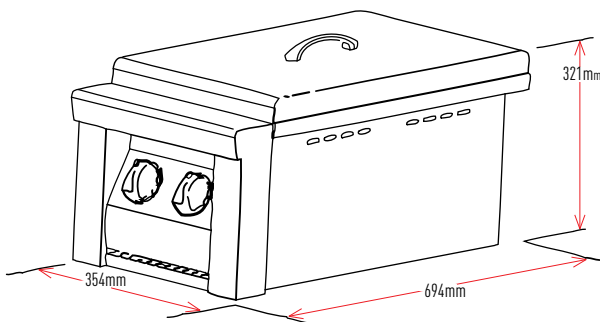
Self ignition valve system

Fueled by LPG or NG

Built-in design for any outdoor kitchen



Cut out dimensions: 280W x 485H x 150D mm



Cut out dimensions: 316W x 591H x 272D mm



## Double Side Burner

**Model:** GFKSB2

Constructed with 443 stainless steel

2 x 18.5MJ/h burners

Self ignition valve system

Fueled by LPG or NG

Built-in design for any outdoor kitchen

## 30" Beverage Center

**Model:** GFKBC

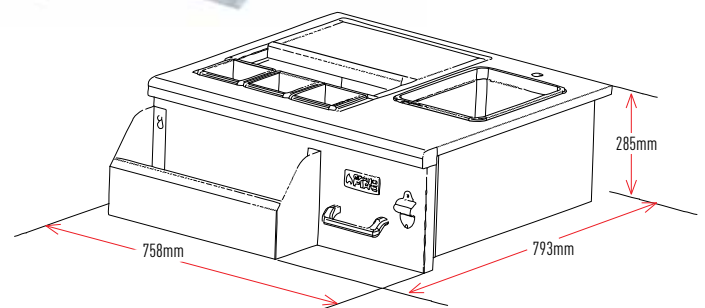
Quality 304 stainless steel

Inbuilt sink

Three removable condiment trays

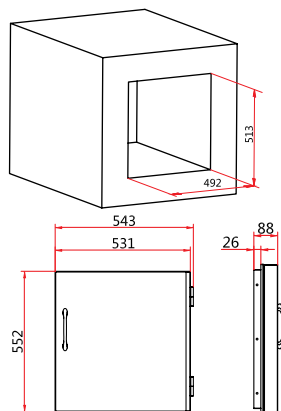
Large, well insulated ice chest with drain connection

Bottle opener and speed rack



Cut out dimensions: 712W x 260H x 600Dmm

# / GrandFire / Additions - Built-In Series

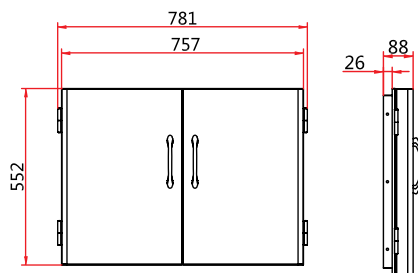
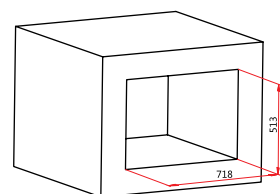


## Stainless Steel Single Vertical Door

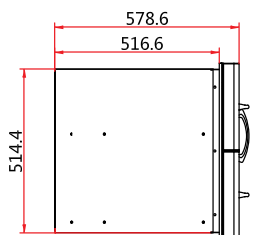
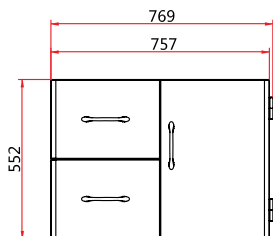
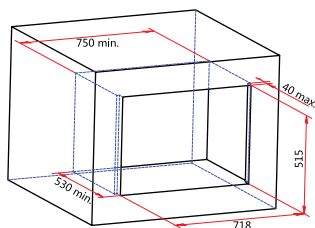
Model: *GFK2101*

Cut out dimensions: 492W x 513H x 530D mm

## Stainless Steel Double Doors



Cut out dimensions: 718W x 513H x 530D mm



## Stainless Steel Door / Drawers

Model: *GFK3002*

For added convenience, GrandFire offers Built-in SS Doors & Drawers Combo that fit perfectly under your built-in grills. This combination of a single access door and a dual drawer, adds a space saving design feature to any island.



Cut out dimensions: 718W x 515H x 530D mm

# Portable BBQ's & InfraRed Patio Heaters / GrandFire /

## Portable BBQ

Designed for portable use and built to withstand harsh marine environments, but also perfect for boating, RVing, tailgating and patio or deck grilling. They are constructed of high-quality 316 Marine grade stainless steel and come fully assembled. Integrated fold-away legs enable easy grilling on any flat surface.



**Model:** BUO-P10

316 Grade Stainless steel construction (marine grade)

Powerful U-shape stainless steel burner (heat output: 15,000BTU/h)

Removable grease catcher

Stay-cool handle

Fuel type: LPG gas

One POL regulator included

Foldable legs and lockable hood

Cooking area: one-piece integrated stainless steel grill & hotplate

530mmW x 330mmD, 4mm thickness

BBQ body size: 560mmW x 365mmD x 360mmH (when hood is closed)

An easy removable chopping board added – 170mmD x 510mmW

## InfraRed Patio Heaters

**It's Powerful...** the 3.2kw /6.4Kw infra-red ceramic element is specially designed to reflect maximum heat right where it is needed.

**It's Cost Efficient...** get a whopping 40 hours /20 hours of average use out of a standard 9kg LPG gas bottle...that's over 4x more running time than a traditional LPG gas heater!

**It's Adjustable and Mobile...** adjust the height up or down to your perfect position, or just tilt the whole unit back and it easily wheels to wherever you want it!

**It's Directional...** with cleverly designed reflective panels, the wide angled heat band is directed perfectly towards you and your guests every time!

**It's Eco-friendly...** as the gas burns up on the ceramic element, no harmful emissions are released after burning...perfect for covered patio spaces.

**It's Safe...** the easy start electronic ignition has a built in safety switch which will automatically cut off the heater should it be tilted or in the case of strong winds

**It's Built to Last...** made of solid 304 Stainless Steel construction, like all Grandfire products it is beautifully crafted and looks amazing! And the sturdy gas bottle cabinet will hold a 9kg, 12kg or even 18kg gas bottle!



**Model:** BPH-1000

3.2Kw LPG radiant heater

Height adjustable – 2245mm max

**Model:** BPH-200

6.4Kw LPG radiant heater

Height adjustable – 2375mm max

# / GrandFire / Outdoor Kitchen Modules

Grandfire's high quality outdoor kitchen modules provide the ultimate flexibility to create your own instant outdoor entertainment area. Just choose the size of BBQ that suits your lifestyle, and then select from the many additional module units to build up your own amazing outdoor cooking area in any number of different configurations.



## Square Corner Unit

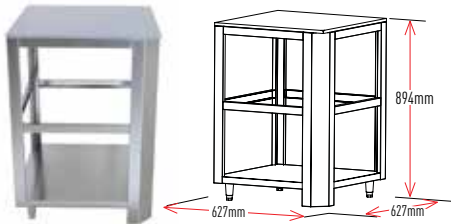
A handy corner unit for extra bench space.

## Side Burner Cabinet Unit

Extend your cooking options.

## Sink Unit

An essential to your complete your outdoor kitchen.



Model: GFK-CN



Model: GFK-SBU + GFKSB1



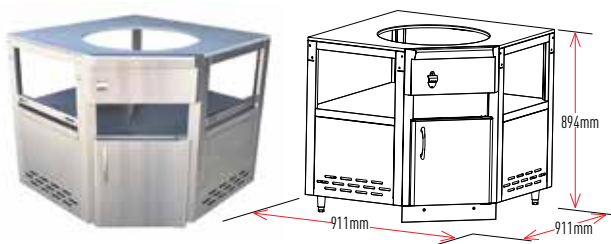
Model: GFK-SNK

## Kamado Grill Corner Unit

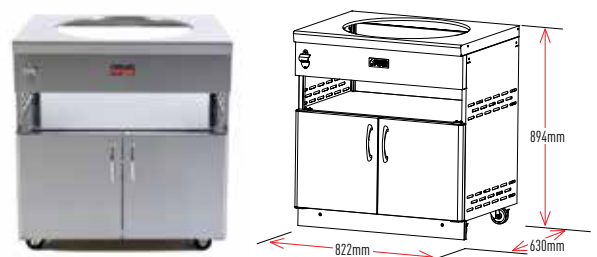
Add Kamado style cooking to your outdoor kitchen corner.

## Kamado Grill Table Unit

A versatile unit for your Kamado grill.



Model: GFK-CNKJ



Model: GF-KJC

# Specifications / GrandFire /



**GF26GC**

**GF32LBGC**

**GF38LBGC**

**GFD30LBGC**

**GFD42LBS6C**

	GF26GC	GF32LBGC	GF38LBGC	GFD30LBGC	GFD42LBS6C
Roast hood construction	Double Skin	Double Skin	Double Skin	Double Skin	Double Skin
Finish #4 oil grain S.S. finish	Yes	Yes	Yes	Yes	Yes
Main burner type	S/S tube burner	S/S tube burner	S/S tube burner	S/S U-burner	S/S U-burner
Main burners	16.8 MJ/h x 2	16.8 MJ/h x 3	16.8 MJ/h x 4	26.25MJ/h x 2	26.25MJ/h x 3
Sear burner	-	-	-	-	21MJ/h x 1
Infra-red rotisserie burner	-	14.7MJ/hx1	14.7MJ/hx1	12.08MJ/h x 1	14.7MJ/h x 1
Side burner type	Optional	Optional	Optional	Single side burner	Single side burner
Side burner	11.6MJ/h	11.6MJ/h	11.6MJ/h	11.6MJ/h	11.6MJ/h
Cabinets / Draws	2 access doors	2 access doors	2 access doors	2 access doors	Double Drawers & Single door
Ignition system	Self Ignition	Self Ignition	Self Ignition	Hot Surface Ignition	Hot Surface Ignition
Temp gauge	Stainless, up to 800°F	Stainless, up to 800°F	Stainless, up to 800°F	Stainless, up to 800°F	Stainless, up to 800°F
Warming rack	603 x 164mm	755 x 164mm	908 x 164mm	689 x 210mm	994 x 210mm
Flare cap system	Flame tamer	Flame tamer	Flame tamer	Ceramic briquettes	Ceramic briquettes
Slide out gas bottle drawer	yes	yes	yes	yes	yes
Full width stainless steel drip tray	yes	yes	yes	yes	yes
Rotisserie kit	-	240V SS Motor & Kit	240V SS Motor & Kit	240V SS Motor & Kit	240V SS Motor & Kit
In hood halogen lights	-	2	2	2	2
LED front lights	-	-	-	yes	yes
Weather cover	yes	yes	yes	yes	yes
Fuel type	LPG/Natural Gas	LPG/Natural Gas	LPG/Natural Gas	LPG/Natural Gas	LPG/Natural Gas
Gas regulator & hose		LP regulator with hose pre-installed		LP regulator with hose pre-installed	
S/S Hot plate (D x W)	488 x 246mm	488 x 246mm	488 x 246mm	488 x 335mm	488 x 335mm
Grill size (D x W) / Rod diameter	488 x 340-8mm dia	488 x 492-8mm dia	488 x 645-8mm dia	488 x 346-9mm dia	488 x 329-9mm dia
Cooking area (D x W)	488 x 586mm	488 x 738mm	488 x 891mm	488 x 681mm	488 x 993mm
BBQ dimensions (W x D x H)	1363 x 653 x 1207mm	1515 x 653 x 1207mm	1668 x 653 x 1207mm	1465 x 700 x 1311mm	1770 x 700 x 1311mm
Net Weight	67kgs	88kgs	106kgs	108kgs	123kgs
Warranty - Body, hood & cabinet	10 years	10 years	10 years	10 years	10 years
Warranty - Burners, plates & grill	5 years	5 years	5 years	5 years	5 years
Warranty - Valves, ignitions, burner covers	2 years	2 years	2 years	2 years	2 years
Warranty - other parts	1 year	1 year	1 year	1 year	1 year

\* Optional accessories are available. Ask local retailers for details. Hauland Ltd reserves the right to make modifications and changes.

\* All models are convertible for Natural Gas

## Warranty Information

**Limited Ten Year Warranty:** The stainless steel body housing and cabinets are warranted to be free from defects in material and workmanship when subjected to normal domestic use and service for ten years from the original purchaser. This warranty is limited to the replacement of defective parts, with the owner paying all other costs including labour.

**Limited Five Year Warranty:** The burners, cooking grates and plates are warranted to be free from defects in material and workmanship when subjected to normal domestic use and service for a period of five years from the date of purchase. This warranty is limited to the replacement of defective parts, with the owner paying all other costs including labour.

**Limited Two Year Warranty:** The gas valves, ignitions and burner covers are warranted to be free from defects in material and workmanship when subjected to normal domestic use and service for a period of two years from the date of purchase. This warranty is limited to the replacement of defective parts, with the owner paying all other costs including labour.

**Limited One Year Warranty:** All other components are warranted to be free from defects in material and workmanship when subjected to normal domestic use and service for a period of one year from the date of purchase.

**For additional information regarding this warranty, or information on how to place a warranty claim, visit the GRANDFIRE website or contact your authorised GRANDFIRE dealer in Australia and New Zealand.**



**HAULAND**

[www.hauland.co.nz](http://www.hauland.co.nz)



STOCKISTS:

A large, empty rounded rectangular box intended for listing stockists.